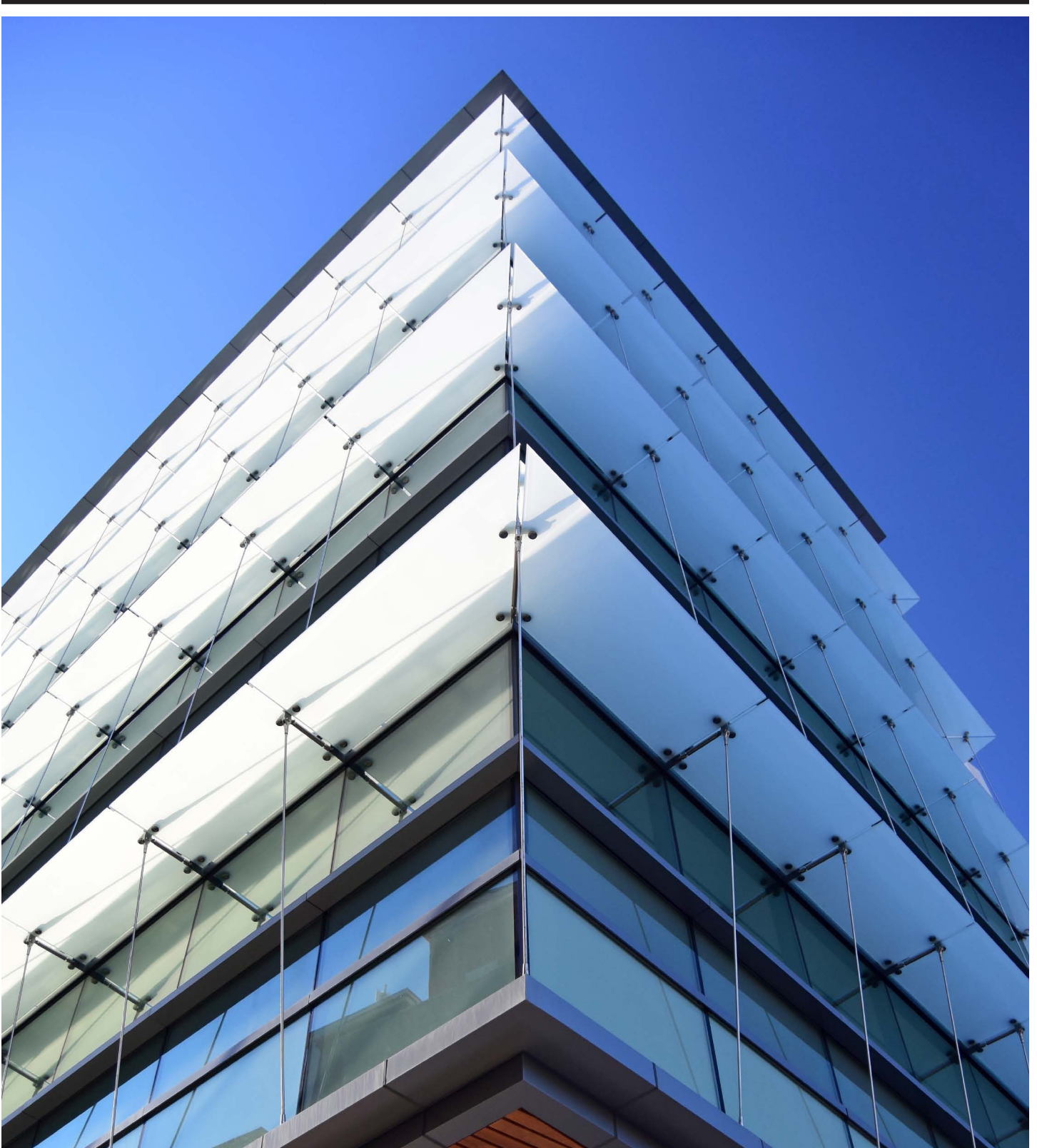


TR-System

Tension Rod

Tensile System

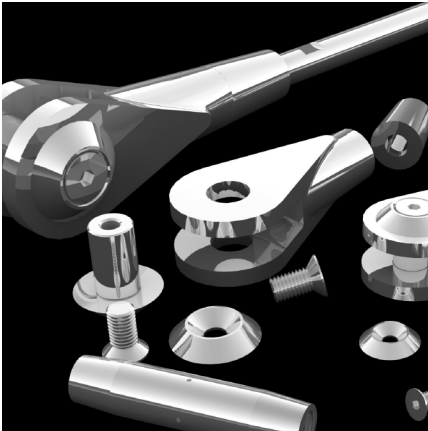
NOVUM



TR-System

Tension Rod

Tensile System

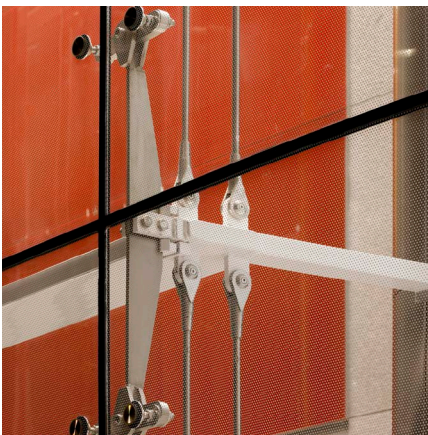


System Components

01. All components are Grade 316 stainless steel
02. Rod ends are cast and polished
03. Rod and pins are machined. Threads are cut or rolled

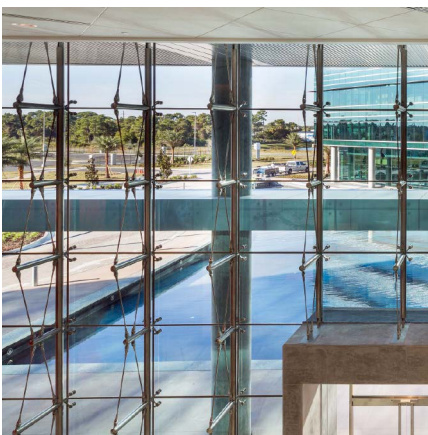
Applications

01. Often used in suspended walls, tension trusses, bracing element for fins/trusses and beams and canopy hangers
02. Tension only elements in any orientation
03. Used where no or minimal prestress is required
04. Typically used in conjunction with projects adopting Novum AES-System, but also GG and BB Systems
05. Excellent for lightweight bracing



System Attributes

01. Clean and classic technology aesthetic
02. System is fully tested and provides a wide range of diameter choices and capacities from 3/8" (10mm) through 1/4" (30mm)
03. Design of optimized clevis ends creates elegant minimally sized connections
04. Affordable and available for projects of any size
05. Different rod diameters can optimize structural needs in any application
06. Rod lengths vary by project specifics. Long rods require Novum couplers
07. Failure mode is designed based on rod strength
08. Tension loads are applied only through the rod end points which rotate on the attachment pin
09. Standard finish and clevis sizes are stocked for quick delivery
10. Rods are fully engineered by Novum's in-house engineers
11. An exclusive Novum System designed for function, aesthetic and design speed
12. Easily integrates with other Novum Structural Systems as a structural component



Options/Materials/Finishes

01. Standard satin finish stainless steel
02. Use of rods with alternate end fittings and different finishes is possible
03. Alternate rod products from high quality strategic partners can also be provided